

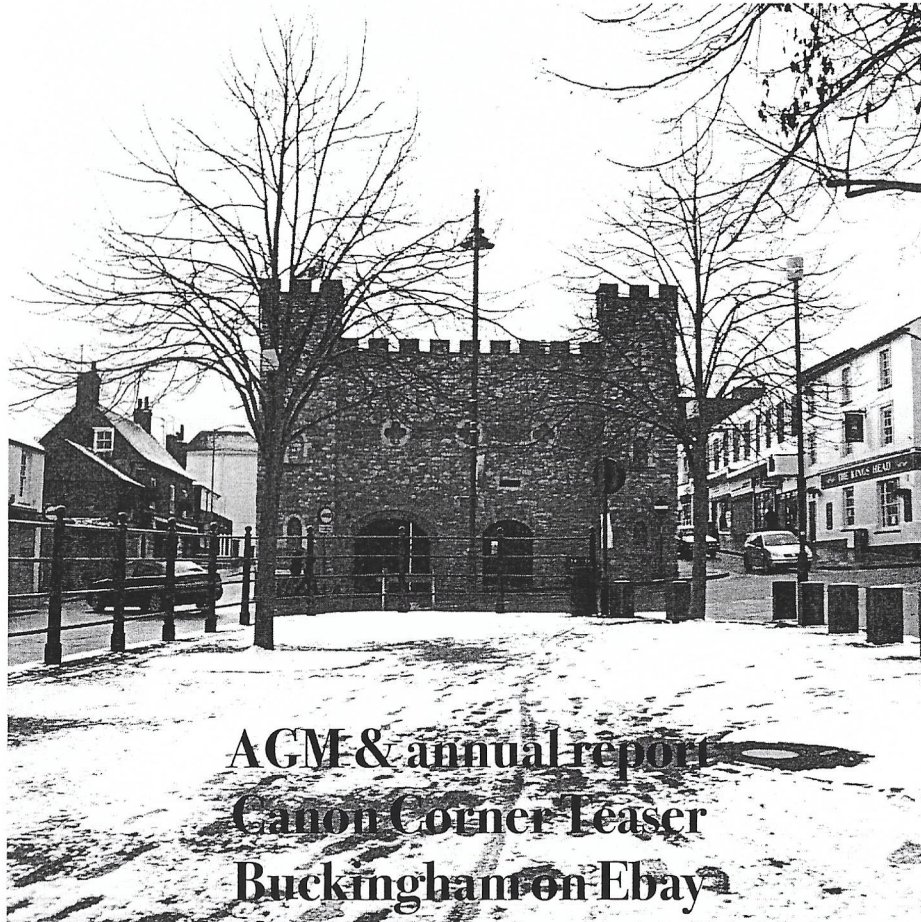


# The Buckingham Society Magazine

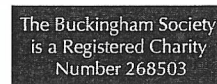
Issue 2007/3 December

Winter Issue

Price £1



**AGM & annual report**  
**Canon Corner Leaser**  
**Buckingham on Ebay**



## The Buckingham Society is your local civic amenity society

A voluntary group of people who care passionately about our surroundings and campaigning to enhance and improve our Town.

Members of The Buckingham Society share common aims:

- 📌 Promote the distinctive character of our town
- 📌 Set high standards of design and sustainability
- 📌 Celebrate and safeguard Buckingham's heritage
- 📌 Find solutions to environmental problems
- 📌 Improve the quality of life in our community
- 📌 Inspire sensitive changes within the places we cherish
- 📌 Create and consolidate effective partnerships between community, business and local government.

The Society is registered with the Civic Trust, one of 850 Civic Societies in England, and is a member of the Association of North Thames Amenity Societies (ANTAS) and the Association of Small Historic Towns and Villages (ASHTAV).

## The Executive Committee Who's Who

### **President**

Stanley Meadows 01280 813133

### **Chairman & Events**

David Peevers 01280 817666

### **Vice Chairman**

Carolyn Cumming 01280 816226

### **Honorary Secretary**

Applications welcome

### **Honorary Treasurer**

Kathy Robins 01280 813967

### **Membership**

Gill Jones 01280 815153

### **Planning**

Hélène Hill 01280 813133

### **Green Spaces**

Ted Farmer 01280 812262

### **Heritage Open Days**

Carolyn Cumming 01280 816226

### **Historian**

Ed Grimsdale 01280 815758

### **Magazine & Web Site**

Warren Whyte 01280 820531

**Post address:** c/o The Dragon Gallery,  
19A Market Hill, Buckingham MK18 1JX

## Chairman's annual report

### 📌 **David Peevers**

The most significant event of the year was the opening of the completed Buckingham Circular Walk; a project first envisaged by the Society many years ago and completed thanks to the funds raised by The Buckingham Community Plan. We have always actively supported the Buckingham Community Plan, which after five years of work has now completed its tasks and is now dissolved.

We are proud to have played a role in helping them deliver the new Buckingham Circular Walk and in the establishment of The Film Place. The Buckingham Community Plan has made a real contribution to the town in its five years of activity and they deserve our thanks.

### **Representation on other bodies**

This year The Buckingham Society has continued to represent the interests of the town within several national and regional civic associations including The Civic Trust, where we have a seat on the executive of Civic Trust South East.

We have two representatives on the board of ASHTAV, The Association of Small Historic Towns and Villages: this year we hosted their AGM here in Buckingham at The University.

Closer to home we are active in the AVDC Vision 2031 forum which is looking at the development of Aylesbury

Vale in the coming decades. This gives us a chance to air our views on matters of concern to members including housing, transport and other such issues. We are members of The Buckingham Partnership which is a valuable forum consisting of the Town, District and County Councils plus other groups representing special interests such as the university, business and ourselves.

Once again we were active during the Civic Trust Heritage Open Days weekend. In the year which saw several events marking the 60th anniversary of the death of Flora Thompson we co-hosted a literary event with the Swan and Pen Society at which Dr John Clark and Amanda Nicolson talked about two other 'local' literary ladies: Mary Leaper and Enid Blyton.

### **Active Planning Group**

Our Planning Group, under the leadership of Helene Hill continues its work of monitoring all planning applications in the town and expressing its view when appropriate. In this way, the Society has early warning of developments which enables us to take a considered view before expressing our opinions.

The planning group meets every three weeks and I should like to thank Helene for the considerable effort she puts in on our behalf.

## Who's nicked our bird?

Ed Grimsdale

### Tales of Swans and Geese

Swans and Buckingham have a history that is probably longer than bacon and eggs. The Town that grew up in a loop of the Great Ouse that was, and is, a home for swans, still lives under the shadow of the great bird that perches above our 18th century Town Hall. If swans had not become a protected, royal bird, some of us would be relishing the thought of sitting down for a roast swan Christmas dinner.

Male Swans fight viciously and their powerful wings are capable of inflicting serious injury. There's a rogue male swan on the Ouse in Buckingham. Other males come, and other males go, but God help their cygnets. Buckingham is now a one cobb town.

I doubt if it was the commonly accepted symbolism of swans: poetic harmony and learning, or lover thereof; light; love; grace; sincerity; and perfection that prompted "our" Duke of Stafford to put the bird on his escutcheon. Neither were "the muster'd men of Buckingham" fighting under the swan at the Battle of Agincourt because they loved poetic harmony. No, these brave Buckingham men were evoking the spirit of the warrior bird that Aristotle claimed could vanquish even an eagle!

Angus Davidson suggests that three or four "Swan" Inns have been established in Buckingham of which only the Swan

and Castle still operates. Others include the White Swan, the Black Swan and the more curiously entitled "The Swan with Two Necks" that plied its trade between 1790 and 1907. There are many such two-necked pubs throughout England and the usual sign shows a swan with a second neck and bill. Maybe, the artists are improving the bird's renowned perfection and symmetry. However, writers from the 18th century onwards have pointed out that their name was a corruption caused by ignorance. Swans were marked with notches or nicks on their bills at censuses held to establish ownership.



Such events still take place on the Thames at "Swan-Upping" time. Most swans have a royal pedigree, but in times past some belonged to individuals and companies. The Worshipful Company of Vintners marked theirs with a nick on each side. That's the true origin of the Inn signs. So, our public house, should it arise like a phoenix, must be named "The Swan with Two Nicks".

Since the decree of 1482 forbade anyone owning less than five marks-worth of property from possessing swans, the poor people of Buckingham have had nothing better than a goose at Christmas – until turkeys "flew in" from America about a hundred years ago. Buckingham has had its own gaggle of white geese –

three in number – that made the Hunter Street campus of our University their home. Sadly Buckingham Society members tell us that their number has been reduced to two. One wonders whether the third bird has died a death from natural causes or has it been "nicked" to make a seasonal banquet.

## Duke of Buckingham upon Thames

Ed Grimsdale (Merely a Chymist and buffoon!)

Many readers will know that George Villiers, 2nd Duke of Buckingham, lived in some splendour in York House in Adelphi on the banks of the river Thames. Our Duke sold his property to developers in 1672 for a much needed £30 000.

All that's left of his glorious riverene stack is his noble, rusticated York Watergate, now stranded many yards from the river Thames in Victoria Embankment Gardens.

Ever vainglorious, Villiers imposed a condition on the sale: that the new roads be named in perpetual memory of himself! Thus a wanderer descending from the Strand (i.e. river or sea shore) to the Thames would have seen:

GEORGE COURT  
VILLIERS STREET  
DUKE STREET  
OF ALLEY  
BUCKINGHAM STREET

The roads that remain are emphasised. Two have disappeared: the delightfully named Of Alley was a minor thoroughfare and disappeared a long time ago; Duke Street exists but was renamed around World War Two when it was felt that the Adam brothers should be acknowledged.

So, now to view our Duke's Street, one must enter "John Adams Street". For good measure, the old stack is remembered in York Place.

So, next time you're in London why not explore the area that lies east of Charing Cross Station and south of the Strand? Aim to finish your amble in the Strand. Then you can pop into "THE GEORGE" and toast the man, of whom Dryden wrote:

*"Was chymist, fiddler, statesman  
and buffoon...  
Beggard by fools, whom still he  
found too late,  
He had his jest, but they had his estate."*

## The Annual General Meeting

### David Peevers

Over thirty members attended the AGM on Thursday 29 November at The Sunley Lecture Theatre at the University's Chandos Road campus. The chairman's report is summarised in the introduction on page three in this issue and the annual accounts and the treasurer's report can be found on the last few pages of this issue.

The entire committee was re-elected and now consists of:

David Peevers, chairman,  
Carolyn Cumming, vice-chairman,  
Kathy Robins, treasurer,  
Gill Jones, membership secretary,  
Ted Farmer, green spaces,  
Ed Grimsdale, historian,  
Helene Hunt, planning,  
Warren Whyte, web site & magazine editor.

Following the AGM, Ian Nutt from the ground-breaking Ethical Foods Company based in Verney Junction gave an

excellent presentation showing the range of ethical food products that are now available from this local source. After the meeting members enjoyed food and drink kindly supplied by The Ethical Food Company. We thank them for supporting our AGM in this novel and generous manner.

*Ian Nutt celebrating EF's birthday earlier this year with the help of Iain Duncan Smith.*



*The executive is pleased to advise that subscription fees for 2008 will remain the same as 2006 and 2007.*

## Magazine cover notes

### Warren Whyte

Regular readers will notice that we have a white cover for the first time in a number of years. If you thought we chose white as it seems appropriately seasonal, you'd be wrong. AVDC have changed the recycling rules again for the kerb site paper collection – and now coloured paper isn't wanted. That's paper with fibre that is coloured such as manila envelopes and the paper used on our covers. So if you don't keep your magazine and want to recycle it, now you can!

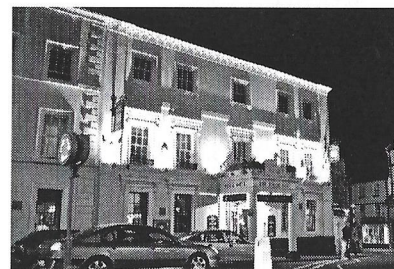


## Bouquets of barbed wire

### Ed Grimsdale

"The Buckingham Society is made up of volunteers who care passionately about our surroundings and we campaign to enhance and improve our town," is our Society's Mission statement.

It's good to hear of individual initiatives that improve our town. You may have noticed two things this autumn.



Firstly, the White Hart, one of Buckingham's two remaining coaching Inns, suddenly bloomed in September after a summer of looking forlorn. What's the tale? Well, Anthony Smith, who was born into a Buckingham "Hotel" family that ran the Swan and Castle, campaigned all summer without pausing for a pint of the Inn's best bitter. Managers seemed to come and go, but Anthony, true to his nickname "Tiger" kept "on message".

Eventually, a sympathetic, lady manager arrived at the White Hart, she gave Tiger a contact number for one of her bosses in London. Tiger roared down the line

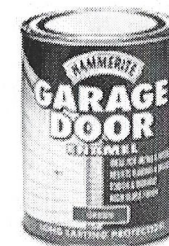
and within a couple of days shed loads of flowering plants arrived to beautify the Hotel that is such an important part of the Buckingham street scene.

And... what about the greening of the "blue-green" pedestrian bridge across to the Heartlands? Yes, it was repainted in a nice "Buckingham" shade of green. But, have you noticed how it has stayed graffiti free? Unnatural, you may think. What's the secret? Well our man persuaded the painters to give him a pot. Every time a graffito appeared our Tiger painted out its stripes. Vandals don't like their work being spoiled. Early in September, Mr Smith reported that the bridge had received no attacks for over a month.

If you have a story of a Buckingham person taking positive action, do tell our Editor, Warren Whyte.

### Editor's Note –

*Hammerite indeed do offer a Buckingham Green (but only in their Garage Door range), but were unable to say why it*



*was named after our town. Bizarrely, Land Rover call a shade of their blue paint Buckingham Blue – perhaps in tribute to the colour of our MP?*

## Christmas teasers – Canon Corner

**Ed Grimsdale**

Here are four brain-teasers to try out on your Buckingham friends who aren't members of the Society this Christmas:

1. "Where is Cannon Corner in Buckingham?"
2. "Which other Buckinghamshire town buried a cannon at a corner?"
3. "Where's Buckingham's cannon that stood as erect as a sentry at Cannon corner?"
4. "Which Buckingham Town Councillor is remembered on a plaque as one of the apprentices who built a carriage for Buckingham's cannon?"

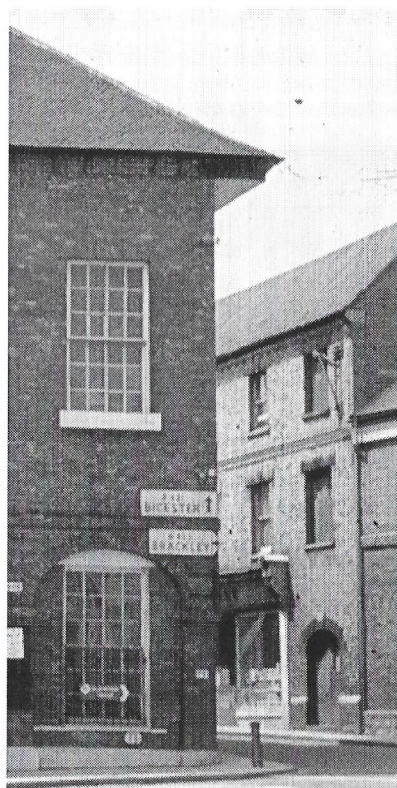
I bet very few "locals" will be able to answer all four questions either before or after their Christmas lunch.

### Let's look for answers

Many people still call the corner between the Town Hall and Castle Street Cannon Corner although it must be about thirty years since the cannon was removed, after, I think, an embarrassing incident with a lorry. Look at the picture from 1965: Buckingham's battered bollard appears in pole position.

The romantic story says that it was buried complete with its carriage – but that strains credibility. The corner was always a difficult, narrow opening. Some say that the Town Hall was cut back by

about four feet in the 19th century to allow bigger stagecoaches to get into town. The roof's "overhang" proves that, doesn't it?



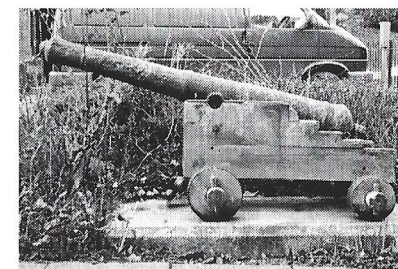
What is certain is that the nearby opening from Bridge Street was tiny and £100 of Council money was spent in 1862 to widen "Kirby's corner". You



probably feel that it should be widened further given the number of times that "Kirby's" bollard gets rammed.

Pop over to Newport Pagnell and you'll find the public house "The Cannon" right on the High Street. Again, a cannon once guarded its corner. Locals say the cannon dated from the time of the Civil War. Another reason to check out this cannon is that it's a pub much recommended by CAMRA. But, watch out, gents: the publican is a stickler for civility; enter wearing your cap at your own risk!

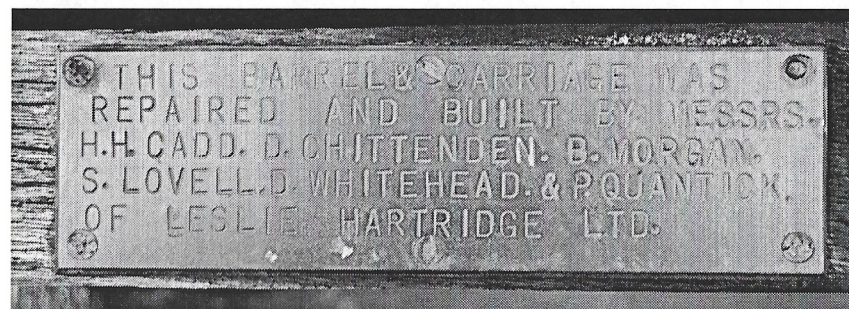
Our cannon is tucked away alongside the entrance to North End Court at the other end of Buckingham's marketplace. Look at the way roses are camouflaging its attack on the Old Gaol. Soon, it will



make a fine cover for a release by Guns N' Roses. Ah apprenticeships – those were the days when lads from school were taught skills or a trade with imagination and rigour.

Councillor Hedley Cadd was amongst a group of apprentices at Hartridge's that was given the job of producing a carriage strong enough to support a heavy cannon. They invested time and pride and their work has survived the test of time. But, now, the oak is showing signs of cracking open. Water will get in and the timber will split.

Buckingham Society appeals to today's youngsters to volunteer to renovate the woodwork and give this piece of old Buckingham a lick of paint and varnish.



## The Old Gaol – an invite to volunteer

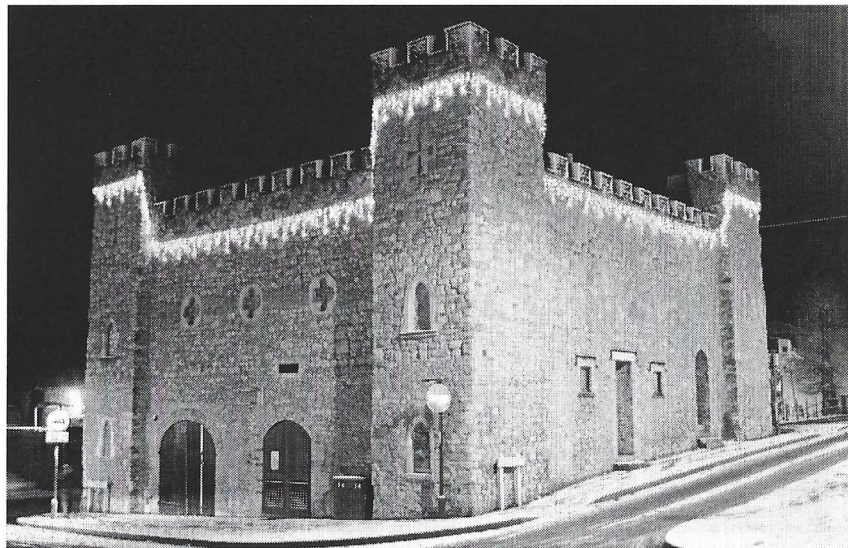
### *Hélène Hill*

Do you know what is hidden within the battlemented walls of this stone building in the middle of Buckingham? Those who have lived in the town some time may have visited the former restaurant or antique shop here. Many pass it by without a second look, some even consider it is in the way of the traffic.

But come inside: find the modern Tourist Information Office, serving locals as well as tourists with a mine of local information; pick up leaflets, bus and train timetables, book tickets for National Express, concerts, The Film Place and local events. Then explore Buckingham's long and colourful history in the museum in the former cells, and the Flora Thompson collection. Then browse

in the Cell Shop. If you like what you find, please join us. A registered charity running an independent museum we have to charge for admission, but join as a Friend or a member of the Trust and get free admission.

Better still, help us keep the building open by becoming a volunteer. The shop is staffed by volunteers working three hour shifts, 10am to 1pm, and 1pm to 4pm. Volunteers can choose how often they come in, some like a regular weekly slot, others every other week, some just occasionally. Training is given and there are other jobs to be done in the building. Why not come in for a chat, or phone the manager John Roberts at the Museum on 01280823020, or me, Helene Hill.



## SIG Report: Green Spaces

### *Ted Farmer*

The Portfields end of Heartlands, nearest London Road, has not yet been adopted by AVDC but numerous required remedial works are generally minor and it is hoped they will be completed soon.

The lower areas have recovered quite well from damage during the Circular Walk path construction and flooding, but remain very wet. The very visible Heartlands is now looking more established and attractive but there must be battalions of moles under some parts. Autumn invariably exposes a good deal of rubbish and Lesley Davies of AVDC has agreed to do a litter sweep.

A substantial schedule of tree works by AVDC, in Maids Moreton Avenue and various other areas have not yet been completed and may have to roll into next year's budget. I compliment the Friends of MMA for the steps which greatly improve access from the Foscothe Way gate.

We have noted with some concern the disease very widespread among horse chestnuts and are informed it is due to the larva of a moth which needs a good spell of frost to eliminate or it will recur and progressively weaken the trees.

A common ash was specified by AVDC as replacement for the splendid copper beech now sadly gone from McKenzie Close – London Road. Several more

striking alternatives were suggested by Carolyn Cumming, but fear of falling fruit or nuts led to compromise on a variety of ash named Jaspidea, notable for golden colour in spring and autumn. Seventeen more trees are to be planted around the town in December; some are replacements of previous failures.

### *The Cutterne Elm*

The planting pit for the replacement of the historic Cutterne Elm, at the corner of Castle Street and Elm Street, awaits the tree, which has been selected for best disease resistance. An up-lighter, the final course of coping stone and repair of surrounding tarmac should all be complete by the time you read this. The Chairman's report, in this issue, records the Society's donations to the tree.

We are also sharing with AVDC some historical details from Ed Grimsdale's research. During excavation of the pit a large piece of old tree root was unearthed.

There is naturally speculation on whether, by chance, the replacement is in the exact location and the root part of the original tree, first recorded in the mid-16<sup>th</sup> century. The root is being kept under water and hopefully will be subject to laboratory examination, which has caused some eager anticipation and I hope there will be more to come on this.

## SIG Report: Planning

---

### **Hélène Hill**

Following the recent frequent flooding in the town, this group has decided that we should consider all planning applications for their potential to increase flooding, not just when they are on the flood plain.

Too much hard surface for roads, driveways, carparking, patios, play areas etc. all add to run-off of rainwater which makes its way quickly into water courses then into rivers, causing flash floods. Allowing run-off to soak into the ground, catching rainwater in water-butts for garden use, or better still for grey water use in the home, would all slow the flow into the rivers at the same time reducing the demand for drinking water.

This retention and use of rainwater was one of the features in the plans for the White Hart car park development that particularly recommended it to us. These revised plans have been formally approved after a few minor amendments.

The Coopers Yard site nears completion with work on the riverside retaining walls and landscaping. We understand that the willow trees will be pollarded, opening up the view of London Road bridge from Ford Street bridge. We have submitted text for an interpretation plaque to be placed near the Ford.

The saga of the block of garages for the new terrace behind Stratford House,

High Street goes on and yet again on. Each time a plan is rejected, another one is submitted, the last for just one flat above the garages.

Following on from the sustainability document that we read in the summer, we note the applications for solar panels. We realise there is a conflict of interests within a conservation area and on listed buildings between sustainability and aesthetics, so we were pleased to see the neat solution on the Manor House, of placing solar panels behind the castleations round the roof of the conservatory; result, near invisibility.

When we send comments on planning applications to Aylesbury Vale District Council, who make the decisions, we send a copy to the Town Council. It is important that the first layer of democratic representation in local government knows the views of the local people they serve.

Anyone can comment on planning applications, look out for the yellow notices that have to be displayed on the site, or read about them in the local paper, or in the Town Council Offices in Cornwalls Meadow. Or from the comfort of your home go to [www.aylesburyvaledc.gov.uk](http://www.aylesburyvaledc.gov.uk) If you do wish to comment, either to object or support, please send a copy to the Town Council.

## Guest Writer

---

### **John Bercow MP**

*The Buckingham Society invited John Bercow, Buckingham MP for the past ten years, to write about some of the work he does. In this second article (written before his recent questions in the House), he outlines some of the issues regarding the forthcoming growth in the north Bucks area.*

Aylesbury Vale is expected to accommodate 21,200 new homes by 2026. This is on top of the proposed expansion of Milton Keynes. As your local MP, I am under no illusion that this prospective expansion will be widely popular. It will not. Equally, as your representative, I will not deceive you into thinking that I believe it can or should be avoided. The reality is that some development in our area is both inevitable and desirable. The rising demand for housing in the South East is an inescapable fact. Young people are leaving home earlier, elderly people are living longer and more people are choosing to live alone. Moreover, if owning a home in Aylesbury Vale is not to become the exclusive privilege of the affluent, but instead to be open to young people and others of modest means, extra houses must be built.

The question is not whether development takes place, but how. If it is to lead to an improvement, not a deterioration in the quality of life for local residents, development must be well-planned and sustainable. Proper

management and design are essential. Local authorities must have a say in the design and quality of new buildings so as to protect us from inappropriate development.

Draft proposals require one job to be created for every new home. However, in many two person households, both residents wish or need to work. If they do not wish to commute, we will need to create two jobs per home. Commercial development must not be pushed out by a drive to build ever more houses.

Infrastructure presents the greatest challenge. We need better roads and improved rail links. Schools and health services must be enhanced. Water, sanitation and energy are central too. Thames Water has highlighted the need to upgrade and expand the sewerage system to accommodate growth and this must be factored into any development plans.

Infrastructure needs alone will require a minimum of £713m. The Government has not yet made firm promises of cash. Of course, developers must fund a certain amount but it is not realistic to expect developers both to pay for the cost of social, affordable housing and to subsidise roads, schools and health clinics. Central government must play its part and I will continue to lobby Ministers in order to get the best deal for Aylesbury Vale.

Rural Bucks faces a particular challenge to prevent the sprawling estates and monotonous infill which would ruin the character of our area. Whilst the bulk of development will be urban, new rural dwellings will be needed. The task is to block huge constructions around Newton Longville and to press for more suitable development, including east of the M1 motorway.

Future house building must take account both of the existing flood risks – of which we were all reminded this summer - and of the impact of development upon the waterways. You can be sure that I will go on raising the issues as often and as forcefully as necessary so that the views of local residents are heard.

At this stage, I have three pressing concerns. First, everyone, including ministers, recognises the primacy of infrastructure described above but we in Aylesbury Vale require clarity from Government. At present, by contrast, confusion reigns. The Housing Minister, Yvette Cooper, has repeatedly acknowledged that the sustainable development which she envisages requires infrastructure to be put in place. Yet, in August 2007, the Government's panel of planning inspectors published a report in which it argued that it did 'not agree that housing levels should be made contingent upon the delivery of necessary infrastructure.' I have already written to the Minister to seek an urgent clarification and I will continue to chase the matter as necessary in the period ahead.

Secondly, we must be assured of the quality of new building. In an audit of

new homes in London and the South East, the Commission for Architecture and the Built Environment described 80% as mediocre or worse. This simply won't do. Ministers must demonstrate their concern and ensure that the construction in our area is of the highest quality, not least to enable this country to meet the prized goal of greater energy efficiency.

Finally, homes that are genuinely affordable must be part of the picture. If we are to accommodate new development in the countryside, it would be intolerable if it consisted of executive homes on the one hand and somewhat cheaper properties that were still way beyond the reach of average earners on the other. Legislation on housing and planning is expected to feature in the Queen's Speech. On your behalf, I will scrutinise that legislation and lobby ministers at every turn to deliver for our community.

*Editor's Note: It is a widely held belief that north Bucks will suffer greatly if the infrastructure is not realistically dealt with. On the 4 December, John Bercow debated the issues relating to growth in our area and asked the Minister of State the following questions in his speech to the House.*

"The issue is not whether we have new development in Aylesbury Vale but how much we can realistically be expected safely to absorb. The challenge from the point of view of my constituency and beyond, [is that] the housing element is mandated; the infrastructure is not." John Bercow referred to Roger Tym and Partners survey of the likely increase in

infrastructure needed to support the likely new development in Aylesbury Vale which calculated that £768 million of expenditure would be required. He also emphasized that the South East Plan stated that housing needed to be "closely related" to the availability of infrastructure and associated services. John Bercow drew the Minister's attention to the necessary infrastructure improvements which are needed to the A413, A418, A4146, and A421, to the need for a new higher education centre, to the need for flood defence works and additional utility services, of which electricity supply and waste water treatment capacity are currently major concerns.

The findings of HEDRA Consultants which predicted that Aylesbury Vale needs 489 acute hospital beds by 2031 or 142 additional beds, service changes to deliver extra community care, more day surgery and greater domiciliary support for discharged patients, 84 more community beds, 56 more community day places, the capacity to make 100,000 A&E visits, 3000 more 999 calls to the Ambulance Service, 1100 more first contacts with a district nurse and more than 200,000 more GP consultations.

Iain Wright, the Parliamentary Under-Secretary of State for Communities and Local Government, who responded to the debate recognised the need for 'the necessary infrastructure accompanies development' and drew attention to the Planning Bill which will allow a Community Infrastructure Levy on new developments to support infrastructure delivery.

### **Roof Tax to fund infrastructure?**

*Warren Whyte adds: The Government has finally decided to replace its original proposals for a new land tax involving a Planning Gain Supplement (PGS) in favour of a planning charge similar to the scheme currently in operation in Milton Keynes, and often referred to as a Roof Tax.*

*Whilst on the face of it this will help fund much needed infrastructure, it will in effect add a new stealth tax to new houses by increasing the cost by over £15,000 per dwelling. One then wonders why new build is VAT free, yet alterations to existing properties attracts VAT... And then what happens to the much increased stamp duty...*

*Ministers have said that the necessary legislation will be included in the forthcoming Planning Reform Bill. The decision to drop the PGS scheme, recommended initially by economist Kate Barker, was confirmed in the chancellor's Pre-Budget Report (PBR), published on 9 October.*

*This stated that the Government would empower local authorities "to apply new planning charges to new development, alongside negotiated contributions for site-specific matters. Charge income will be used entirely to fund the infrastructure identified through the development plan process". In a Commons statement the minister said the planning charge would "capture more planning gain to finance additional investment in local and strategic infrastructure while preserving incentives to develop".*



## Treasurer's Report

**Kathy Robins**

Treasurer's report for the year ended 30 September 2007 as reported to the AGM. The accounts were accepted and approved.

### Operating Surplus

We have an operating surplus of £556.48

The previous three years were as follows:

Year ended 30.9.2004	Surplus £1,413.49
Year ended 30.9.2005	Surplus £894.38
Year ended 30.9.2006	Surplus £1,690.43

### Other Activities

The receipts and payments of the very wide range of activities in which the Buckingham Society is involved can be seen in the Income and Expenditure Account overleaf.

### Funds at hand as at 30.9.07

Account 1 is now used solely for the St Rumbold's Well project and holds £914.97.  
Account 2 is now the society's main and current account. Our funds were boosted this year by donations towards tree planting in Buckingham.

Funds at 30.9.2007 amounted to:

Lloyds TSB Account 1	£914.97
Lloyds TSB Account 2	£2,677.85
Standard Life direct access account	£2,689.73
<b>Total</b>	<b>£6,282.55</b>

## Audited Accounts 2007

**Kathy Robins**

1 October 2006 – 30 September 2007

	Current year	Last Year	Previous	
INCOME	2007	2006	2005	
	Primary account	Account1	Account 2	
Subscriptions	1014	35	975	989
Donations	674.95		641.31	37
Town Trail Sales	22.5		94.3	79.98
Riverside Walk Guides			12.5	20
Tax Rebate	254.35		316.07	507.91
V&D Statement			22.48	55.98
HODs	120			100
Income from Events				58.63
Old Church Yard				275
Summer in Park				72.72
Transfer from 1st account			599.23	
Church Fete	12.7			
Christmas Fair	46.86		54.77	91.75
Garden Party	54.15			
Antas AGM	165			
Standard Bank Interest	97.69		£47.27	£19.07
<b>TOTAL INCOME</b>	<b>2462.2</b>	<b>£35</b>	<b>£2,762.93</b>	<b>£2,307.04</b>
EXPENDITURE	2007	2006	2006	2005
Administration (General)	201.01		198.89	284.02
Printing membership leaflets		235		
Printing Newsletters	260.88		231.8	117.2
Meetings	128.17		52.6	23.92
Events	60.35		28	144.83
Subscriptions	145		115	140
Website	39.99			
Donations			20	20
Heritage Open Days	127		68.71	190.02
AVDC			96	94
Summer in the Park				
Insurance	230		230	230
Accountant	32.5		31.5	30
Old Churchyard		520		
St Rumbold's				138.67
Planning doc	166.75			
ANTAS AGM	199			
Printing cards	178			
Garden Party	137.07			
Transfer to Account 2		599.23		
Transfer to Standard Life Bank		2000		
<b>TOTAL EXPENDITURE</b>	<b>£1,905.72</b>	<b>£3,354.23</b>	<b>£1,072.50</b>	<b>£1,412.66</b>
<b>OPERATING SURPLUS</b>	<b>£556.48</b>	<b>-£3,319.23</b>	<b>£1,690.43</b>	<b>£894.38</b>
BANK BALANCES				
Lloyds Current 1	£914.97		£914.97	
Lloyds Current 2	£2,677.85		2,164.80	£4,755.84
Standard Bank	£2,689.73		2,592.04	£544.77
<b>Totals:</b>	<b>£6,282.55</b>		<b>£5,671.81</b>	<b>£5,300.61</b>

# Ebay – the ultimate Christmas time waster

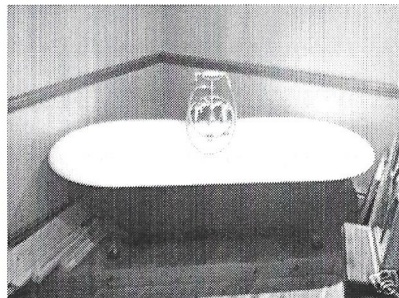
**Warren Whyte**

Ebay can be a great way to waste some time, and during the Christmas period may give some light relief from the inevitable poor films to be shown on the television. For those members who have not found the joy of the virtual car boot that is ebay, one can type in a random word in the search box, and someone somewhere will be selling it. Be it a book, piece of music, a car or a plate, you will probably find it. As a contemporary evening parlour game, why not use some obscure search objects and the one with the least returned items wins!

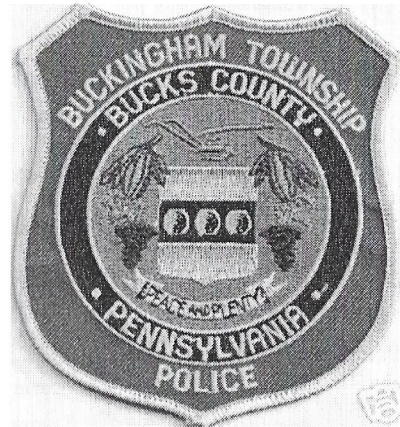


Type in Buckingham and quite a few random and unusual articles can be found. It is quite surprising that it isn't all Buckingham Palace souvenirs and postcards of our very own town...

1. A Heritage Buckingham cast iron roll top bath:



2. A Buckingham Township, Bucks County police badge from Pennsylvania:



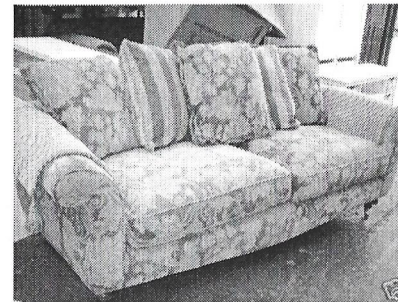
3. A Buckingham deluxe red double 16oz dog bowl:



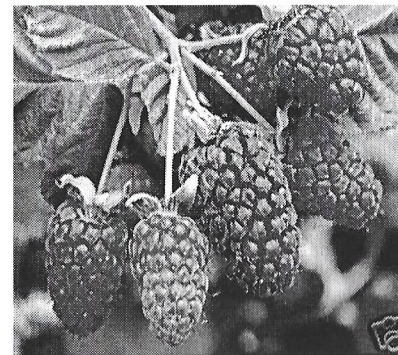
4. A Buckingham flower necklace:



5. Buckingham two piece suite:



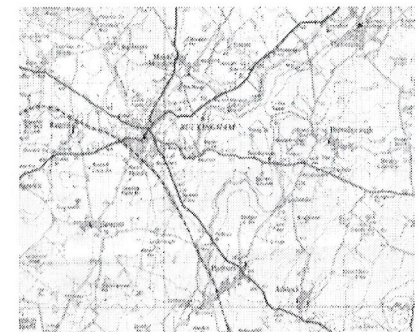
6. Potted Buckingham Tayberry plant:



7. A Buckingham 20ft cruiser moored in Derbyshire:



8. A 1954 Buckinghamshire OS map:



9. Buckingham five-piece pan set:



WARNING – this game can become strangely addictive – and expensive!

## Extreme carol singing

### Ed Grimsdale, BASS

Buckingham Choral Society has established an exciting new sport: Extreme Carol Singing. It all happened on an expedition to Waddesdon organised by Angela Jones. It was not the first year that Buckingham's largest choir had been invited to entertain visitors at the Stables in Waddesdon Manor, so its members knew what to expect: a warm room, crammed to the rafters with joyful visitors. What could be more seasonal than singing carols in a stable?

But Waddesdon Manor is thriving; the warning signs were there as we arrived – cars overflowing from the car-park lined the approach. The Stables had gone commercial, all of Christmas was there to buy with one swipe of plastic. One wing was dedicated to wine-tasting; soon the basses were more than ready to “Wassail”. The “Saturday” choir had been relegated to the stable yard; a couple of gazebos marked our spot.

This being December, global-warming had decided to take time out. The Stables is perched on a side of a hill. The wind howled and the rain was heavy, cold and unremitting. The choir's director, Michael Ridley, avoided choosing “In the Bleak Midwinter”, but many an exposed member sang “While Shepherds Washed their Socks... without facetiousness. Several suggested that their next piece should come from Handel's “Water Music” whilst others wondered whether “Angela's From the

Realms of Glory”. The choir's chairman, Ivan Rowe, assured them there was an appreciative audience, no doubt including Mary and Joseph, INSIDE the stables. By now, Michael Ridley was crouched over his electric keyboard like a witch at a coven – he knew that a few more drips might turn him to toast.

The Choir survived the first “spot”. Now there was a welcome break to “fortify the over-forties”. Whines do not survive wine. “On with the Motley”: only half an hour to go! The sky was as black as coal as we essayed “It came upon a Midnight clear”. There was an audience in the yard, there being no room at the “Inn”. The gazebos were straining on their guys; only the weight of water suspended precariously in giant jowls kept them in place.

But the Tempest had one last trial for the choir: with a great swirl and a violent uplift, it blew itself out in the middle of “Away in a Manger”. Gallons of water fell on singers as gazebos turned from tents into streamers. Michael Ridley ripped out the plug and ran for it, clutching his keyboard to his chest as if it were his dear child.

Extreme Carol Singing had finished early, as the choir dashed to feast on mince-pies, cakes and hot coffee. Their talk suggested that it had been brilliant preparation for their next Gig: Will Todd's “Mass in BLUE”.

## Notes & Queries

### Editorial Information

Articles are commissioned by the editorial team: David Peevers, Ed Grimsdale and Warren Whyte.

As well as keeping members of the Society informed, the magazine is also a chance for you to write about something that interests you about our town. Suggestions and ideas for articles are always welcome. Contact: warren.whyte@buckinghamssociety.org.uk david.peevers@buckinghamssociety.org.uk historian@buckinghamssociety.org.uk

### Next Issue

Submissions and article ideas for the Spring issue should reach the editorial team by end of February 2008.

Letters on topics raised in the magazine are always welcome – email the editors.

### Copyright Information

Articles remain the copyright of the author and may not necessarily represent the opinion or views of the Society or the editor. © 2007 The Buckingham Society

### Charity Details

The Buckingham Society is a registered charity (number 268503).

The Society's mail address is: c/o The Dragon Gallery, 19A Market Hill, Buckingham MK18 1JX

### Further Information

Civic Trust: [www.civictrust.org.uk](http://www.civictrust.org.uk)  
ANTAS: [www.antas.org.uk](http://www.antas.org.uk)  
ASHTAV: [www.ashtav.org.uk](http://www.ashtav.org.uk)

### Design & Layout

Design and layout by Warren Whyte at [whytodesign.co.uk](http://whytodesign.co.uk).

### Abbreviations

As a matter of editorial policy, I keep abbreviations to a minimum. Sometimes few will slip through. Some of the most common ones are:

AVDC: Aylesbury Vale District Council  
BCC: Buckinghamshire County Council  
BTC: Buckingham Town Council  
MK: Milton Keynes

### Latest News

The web site is updated regularly: [www.buckinghamssociety.org.uk](http://www.buckinghamssociety.org.uk)

### Website Advertising

Advertisers and sponsors are invited to help support the website on a monthly or seasonal basis. Please contact the Editor for details.

### Merry Christmas

*The Editorial team wish all our readers a Merry Christmas and a very happy and prosperous New Year.*

## Corporate Members

---

We are pleased to receive support from these corporate members:

**Aerodex-Floyd**  
*www.aerodexfloyd.co.uk*

**Buckingham Nurseries and Garden Centre**  
*www.buckingham-nurseries.co.uk*

**Dragon Gallery**  
*19A Market Hill, Buckingham MK18 1JX*

**Phillips Print & Stationers**  
*Ford Street, Buckingham MK18 1AQ 01280 812692*

If your business is interested in becoming a corporate member of The Buckingham Society please contact the membership secretary listed on the inside front cover.

## Next Event

---

**Events for 2008 re-start in the Spring**  
Look out for details of future events on the Society web site  
and the Clubs & Societies pages of the Buckingham Advertiser

## Address Label

---

**[www.buckinghamssociety.org.uk](http://www.buckinghamssociety.org.uk)**